



Upgrade Instructions

Software Pursuits 

©2008 Software Pursuits, Inc.

Table of Contents

Upgrading to a Newer Version of MigratePro	2
Upgrading an Access Database to a SQL Database	3

Introduction

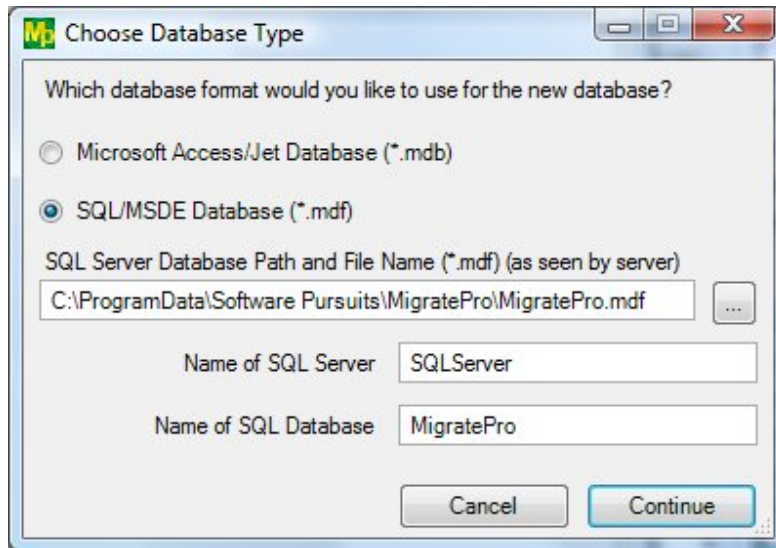
This document outlines the process of upgrading from a previous version of MigratePro to the current MigratePro release level. Also included are instructions on migrating from an Access database to a SQL database.

Upgrading to a Newer Version of MigratePro

1. Download the latest build of MigratePro by [clicking here](#). The MigratePro installer is named MigrateProSetup.exe.
2. On the MigratePro machine, stop any running jobs. Schedules should be placed on Hold on the General tab for each Schedule to prevent them from launching until the upgrade is complete.
3. Close the MigratePro desktop.
4. Stop the MigratePro Scheduler service using the Windows Services MMC.
5. Launch the MigratePro installer (MigrateProSetup.exe). The installer will ask if you would like to perform an upgrade to MigratePro. Answer yes to the prompt and the upgrade will proceed.
6. Once the installer has completed the upgrade, start the MigratePro Scheduler service.
7. Launch the MigratePro desktop and take any Schedules you have defined off of hold status. You can now run Relations and Schedules on the new version. The upgrade is complete.

Upgrading an Access Database to a SQL Database

In addition to the default Access database format MigratePro supports SQL 2000, SQL 2005, and SQL 2008 databases. This includes the free versions of each (MSDE, SQL 2005 Express, and SQL 2008 Express). SQL is a higher performance and more durable database format. MigratePro provides a copy database function to provide simple migrations to the SQL database format.



Steps to convert database from Access to SQL

1. Go to **File | Database | Copy**, which will bring up the window above.
2. Select "SQL/MSDE Database (*.mdf)" from the list.
3. In the "SQL Server Database Path (as seen by server)" field you need to enter the path where you want MigratePro to create the SQL data file.
4. Enter the name of the SQL server or the SQL server instance name in the "Name of SQL Server" field. Please note that the "SQL Data File Path" field is from the perspective of the machine listed here. For example, in the screenshot the "C:\ProgramData\Software Pursuits\MigratePro" directory must exist on the SQLServer machine for the database to be able to be created.
5. In the "Name of SQL Database" field you should enter the name of the database. It is recommended that this be left at MigratePro.
6. Click the continue button and the copy process will start. This can be quite a lengthy process depending on the size of the original database.

Some Notes on SQL

1. MigratePro supports SQL 2000 Server, SQL 2005 Server, SQL Server 2008, MSDE, SQL 2005 Express, and SQL 2008 Express. The MSDE and SQL Express engines can be downloaded from [Microsoft's SQL page](#).
2. Your SQL server must be running either Windows Integrated Security or Mixed Security. SQL only security is not supported. If your SQL server is running SQL only security you will need to use MSDE or SQL Express on the machine where MigratePro is installed. We recommend using SQL 2005/2008 Express.
3. The account, which MigratePro is running under, must have permissions to create a database on the SQL server and permissions to access that database. Please contact your SQL server administrator for assistance with this.